

How to Cite:

Wiyasa, I. N. N., & Mahadi, M. (2024). Implementation of an eclectic interior style at the Ikan Bakar Cianjur Restaurant, Malang City. *Tennessee Research International of Social Sciences*, 6(1), 52–57. Retrieved from <https://triss.org/index.php/journal/article/view/47>

Implementation of an Eclectic Interior Style at the Ikan Bakar Cianjur Restaurant, Malang City

I Nyoman Ngidep Wiyasa

Faculty of Fine Arts and Design, Indonesian Art Institute Denpasar, Indonesia
Corresponding email: ngidepwiyasa@isi-dps.ac.id

Mercu Mahadi

Faculty of Fine Arts and Design, Indonesian Art Institute Denpasar, Indonesia

Abstract--The application of an eclectic style to the furniture and interior at the Ikan Bakar Cianjur Restaurant, Malang City is an effort to shape the interior atmosphere of the room. The interior atmosphere of this room is tailored to the style of heritage buildings in Malang City. The Ikan Bakar Cianjur Restaurant building, Malang City, was designed using an eclectic style that combines several styles into the room. To create a space atmosphere, various interior elements are needed, one of which is furniture, which is considered to provide a visual appearance to the interior space in accordance with the main styling concept. Researchers try to focus the analysis on furniture objects applied to the interior of heritage buildings to create a spatial atmosphere. This research uses a descriptive qualitative research method by conducting direct study and analysis of furniture objects applied as interior elements at the Ikan Bakar Cianjur Restaurant, Malang City. Based on the analysis process, the Ikan Bakar Cianjur Restaurant, Malang City, implements an eclectic interior style.

Keywords---eclectic, furniture, heritage, interiors.

Introduction

Furniture is one of the interior elements that has a crucial function in space, because furniture applications can be used to build the impression of a space. Apart from that, furniture is also a link between the building and visitors and has a role as a balance between the room and its users. The application or application of furniture in an interior space makes the room suitable and can be used according to the level of comfort and type of activity taking place. (Ching, 2018: 330).

This research was carried out as a form of study of the application of furniture as part of a building interior through a visual approach. Generally, the planning carried out on the interior of a room is oriented towards user comfort and creating a room ambience in accordance with the theme and concept that you want to display. This planning is carried out to form the visitor's psychological response to something influenced by the impressions that arise from the visual aspects of the objects in the room (Piotrowski, 2016: 307).

By knowing the relationship between these aspects, it is hoped that this research can become material for further study to determine the involvement of the visual approach of interior elements in forming the visual character of space, especially in colonial buildings which of course require special handling. These colonial buildings have quite a long lifespan and generally have become a heritage of the city, so a special method is needed to maintain the existence of these buildings.

Methods

This research uses a descriptive qualitative approach by using the researcher as the key instrument by combining data and inductive analysis (Sugiyono, 2015). In this study, direct observation was carried out at the research location and carried out observations of furniture objects in the Ikan Bakar Cianjur Restaurant, Malang City. This observation was carried out to obtain data for further analysis regarding the relationship between the implementation of combining certain furniture styles and themes in the interior with efforts to transform colonial Indische style spaces and buildings with a contemporary style.

Researchers conducted an analysis of the furniture displayed in the eclectic interior design style applied to the interior of the Ikan Bakar Cianjur Restaurant, Malang City. According to Amorani (2009, in Tanoko, 2013), eclectic style has the meaning of choosing, combining elements or styles into its own form. The eclectic style is also a symbol of romance in a building because there are various details full of historical stories (Tanoko, 2013: 11). Apart from that, eclectic is also considered as an authentic recreation of various styles based on a timeline that is in accordance with historical values or can also be considered interesting to display (Pile, 2005: 301).

Through this analysis, the research team will try to provide a general reading of the analysis of eclectic design styles and the application of existing furniture in cafe and restaurant spaces. From this analysis, it is hoped that a correlation can be drawn between the furniture and the formation of the room atmosphere. The primary data acquisition stages that will be carried out are:

1. Research Object Introduction Stage

This stage is a research stage that aims to understand the implementation of the right interior design style on furniture in the Ikan Bakar Cianjur Restaurant, Malang City. This research stage was carried out by means of field observations, interviews with managers, and literature study.

2. Data Analysis Stage

The data analysis stage is carried out by comparing the results of field observations which are then grouped, selected and concluded.

Results and Discussion

According to (Ball, 1980 in Wardani, 2009) the Dutch Colonial interior style was a style that was quite popular in the Netherlands in 1624-1820 (Wardani, 2009:54). The application of the colonial style emerged as a result of the colonialists' romanticism about the atmosphere of their home region. However, differences in climate, weather, material limitations, techniques, and other factors found in colonial countries meant that adjustments to form, materials, etc. were required, so that a building form that resembled the design in the country of origin was required. (Pile, 2005:209). The Dutch Colonial architectural style in Indonesia is divided into 3, namely Indische Empire Style, transition period architecture, and Modern Colonial architecture as shown in figure 1 and figure 2. According to Handinoto (1996), Indische literally means Indis or the Indies. Indische culture is a mixture of European, Indonesian culture and a little bit of Peranakan Chinese culture.

The characteristics of Indische Empire Style buildings include a completely symmetrical floor plan, in the middle there is a central room which consists of the main bedroom and other bedrooms. The central room is directly connected to the front and back terraces. The terrace is usually very wide and at the end there is a row of columns in the Greek style (doric, Ionic and Corinthian).



Figure 1. Front view of the Ikan Bakar Cianjur Restaurant, Malang City

Figures 2 and Figure 3 are documentation of the interior space of the Ikan Bakar Cianjur Restaurant building, Malang City. In these rooms you can see the formation of a spatial atmosphere which is a mixture of several colonial interior styles while still displaying the values of local wisdom found in Malang City. According to Ashadi (2018, in Purnomo, 2019) local wisdom is considered a value demonstrated by individuals or communities in an environment. (Purnomo, 2019:358)

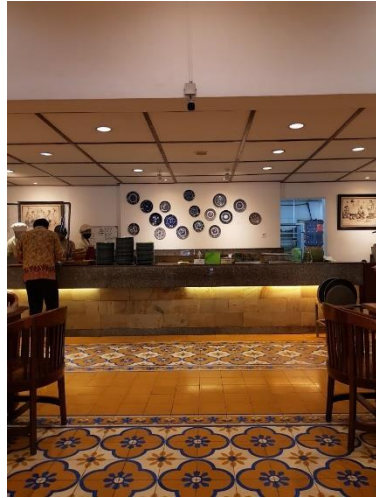


Figure 2. Interior of the Ikan Bakar Cianjur Restaurant, Malang City

The floor in the dining area is applied in an eclectic style which is a mixture of Dutch Colonial style as a building style with the application of Javanese ethnic interior elements and a slight touch of Chinese Peranakan which can be seen in the processing of the furniture. According to Dana (1990, in Nooraddin 2012), identity in a building can be derived from an approach to the shape of the building, the resulting space, and the social interactions resulting from the building. (Purnomo, 2020:19). The application of these various styles occurred due to the interaction of the three dominant groups of society during the colonial era, namely Indonesia, China and the Netherlands (Sumalyo, 1995: 46), so that the mixture of these three styles was considered as forming the identity of the interior of the Ikan Bakar Cianjur Malang City Restaurant.



Figure 3. Interior of the Ikan Bakar Cianjur Restaurant, Malang City

Furniture is an element that cannot be separated from its presence in the world of interior design. Without furniture, space cannot facilitate its use activities optimally according to the reason or purpose for which the space was created. According to Rika (in Hadiansyah, 2016) many restaurants carry the same dining menu concept, so one way to differentiate the uniqueness of each restaurant is through a space theme that has a different identity and characteristics. The thematic carried through interior elements must be able to support the style in the interior design (Hadiansyah, 2020:43).

Conclusion

Based on research conducted by the research team, it was found that the eclectic style that emerged in the Ikan Bakar Cianjur Restaurant, Malang City, was a mixture of Dutch colonial and traditional Javanese styles. The eclectic mix of styles in the space is seen in the continuity of the combination of several styles expressed in the selection and application of furniture. The continuity of the application of several styles can be seen from whether or not a common thread appears or the relationship between the application of furniture elements and the physical condition of the building.

References

- Ching, DK. (2018). *Interior Design Illustrated* 4th edition. New Jersey: John Wiley & Sons Inc.
- Chrisswantra, Freddy. (2021). "Jepera Wood Carving And The Cultural Influences Of The Nusantara Maritime Spice Route". *Serat Rupa Journal of Design*. Vol 5 no 2: 254–269
- Gumulya, Devanny. Richard Santio. (2014). "Gaya Art Nouveau Sebagai Inspirasi Dalam Perancangan Desain Produk". *Jurnal Dimensi*. Vol 11 no 2: 123-134

- Hadiansyah, Mahendra Nur, Alvin Sofyan Hendrawan. (2020). "Persepsi Ruang Pada Interior Restoran Donwoori Bandung". *Jurnal Waca Cipta Ruang*. Vol 6 no 2: 42-50
- Handinoto. (1996). *Perkembangan Kota dan Arsitektur Kolonial Belanda di Surabaya 1870-1940*. Surabaya: Penerbit Andi
- Kristanti, Adelina. (2013). "Studi Gaya Desain Cina Dan Kolonial Pada Furnitur Cafe & Bar Shanghai Blue 1920 Di Jakarta". *Jurnal Intra*. Vol 1 no 2: 1-8
- Novianty, Retno. (2019). "Adaptive Reuse Ex- Omah Lowo Solo As Wood Creative Industry". *Publikasi Ilmiah*. Tidak Diterbitkan. Fakultas Teknik Universitas Muhammadiyah Surakarta
- Pile, John F. (2005). *A History of Interior Design second edition*. London: Lawrence King Publishing Ltd.
- Piotrowski, Christine M. 2016. *Designing Commercial Interiors 3rd edition*. New Jersey: John Wiley & Sons Inc.
- Purnomo, Agus Dodi. Yosi Samsul Maarif. (2019). "Membaca Kearifan Lokal Imah Panggung Bale Atikan Kampung Adat Cireundeu". *Jurnal Waca Cipta Ruang*. Vol 5 no 2: 357-366
- Purnomo, Agus Dodi. Kiki Putri Amelia. Safira Dirayati. (2020). "Penerapan Elemen Estetik Sebagai Identitas Budaya Lokal Pada Elemen Interior Terminal Penumpang BIJB Kertajati". *Jurnal Waca Cipta Ruang*. Vol 6 no 1: 19-24
- Sachari, Agus. (2006). "Pergeseran Gaya Pada Desain Furnitur Indonesia Abad Ke-20". *Jurnal Dimensi Interior*. Vol 4 no 1 hal: 9-16
- Sugiyono. (2005). *Memahami Penelitian Kualitatif*. Bandung: CV. Alfabeta
- Sumalyo, Sumanto. (1995). *Arsitektur Kolonial Belanda di Indonesia*. Yogyakarta: Gadjah Mada University Press
- Sumarno, Caroline, Nurhasanah. (2018). "Gaya Desain Baroque dan Rococo pada Lemari Schepenkast di Museum Sejarah Jakarta". *Jurnal Mezanine*. Vol 1 no 1: 29-36
- Tanoko. Fani Kusuma. (2013). "Penerapan Gaya Eklektik Pada Interior Dream Of Kahyangan Art Resto Surabaya". *Jurnal Dimensi Interior*. Vol 11 no 1 hal: 11-21
- Wardani, Laksmi. (2009). "Gaya Desain Kolonial Belanda pada Interior Gereja Katolik Hati Kudus Yesus Surabaya". *Jurnal Dimensi Interior*. Vol 7 No 1: 52-64